

**Summary****Board Bill Number 186****Primary Sponsor: Alderwoman Marlene Davis****December 11, 2020**

An Ordinance recommended by the Planning Commission on December 2, 2020, to change the zoning of property as indicated on the District Map, from the “C” Multiple-Family Dwelling District to the “G” Local Commercial and Office District, in City Block 2294 (3636 Page Blvd.), so as to include the described parcel of land in City Block 2294; and containing an emergency clause.

**BOARD BILL NUMBER 186 INTRODUCED BY: ALDERWOMAN MARLENE DAVIS**

1           An Ordinance recommended by the Planning Commission on December 2, 2020,  
2 to change the zoning of property as indicated on the District Map, from the “C” Multiple-  
3 Family Dwelling District to the “G” Local Commercial and Office District, in City Block  
4 2294 (3636 Page Blvd.), so as to include the described parcel of land in City Block 2294;  
5 and containing an emergency clause.

6 **BE IT ORDAINED BY THE CITY OF ST. LOUIS AS FOLLOWS:**

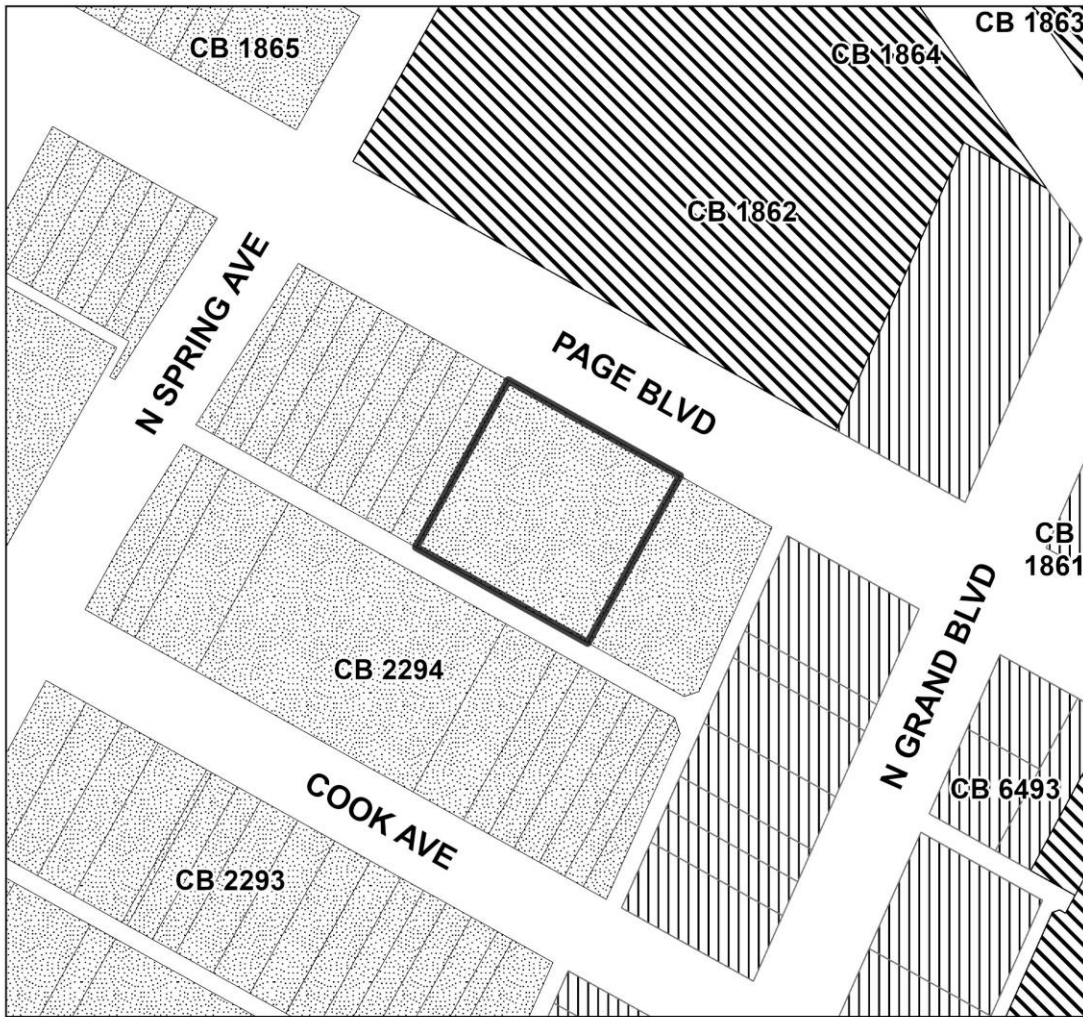
7           **SECTION ONE.** The zoning designation of certain real property located in City  
8 Block 2294 is hereby changed to the “G” Local Commercial and Office District, real  
9 property being particularly described and shown in **Exhibit A** as follows:

10           The Western 20 feet of Lot 2, all of Lots 3, 4, 5, 6, 7 and 8 of Henry Stagg's  
11 Subdivision in block 2294 of the City of St. Louis, together fronting 170 feet on the  
12 South line of Page Boulevard by a depth Southwardly of 165 feet to an alley.

13           **SECTION 2.** This ordinance being necessary for the preservation of the health,  
14 safety and welfare shall take effect and be in full force immediately upon approval by the  
15 Mayor of the City of St. Louis.

# EXHIBIT A

## DISTRICT MAP



### Current Zoning District

#### ZONING

A Single Family Dwelling District

B Two-Family Dwelling District

C Multiple Family Dwelling District

D Multiple Family Dwelling District

E Multiple Family Dwelling District

F Neighborhood Commercial District

G Local Commercial & Office District

H Area Commercial District

I Central Business District

J Industrial District

K Unrestricted District

L Jefferson Memorial District

Rezoning Area

3630-36 Page Blvd

PDA-082-20-REZ

CITY OF ST. LOUIS  
**PLANNING**  
 & URBAN DESIGN  
 AGENCY