

CITY OF ST. LOUIS, MISSOURI

FISCAL YEAR 2015

ANNUAL OPERATING PLAN



**As Adopted
June 27, 2014**



BOARD OF ESTIMATE AND APPORTIONMENT

Francis G. Slay, Mayor
Darlene Green, Comptroller
Lewis E. Reed, President Board of Aldermen

BOARD OF ALDERMEN

Sharon Tyus, Ward 1
Dionne M. Flowers, Ward 2
Freeman Bosley, Ward 3
Sam Moore, Ward 4
Tammika Hubbard, Ward 5
Christine Ingrassia, Ward 6
Phyllis Young, Ward 7
Stephen Conway, Ward 8
Kenneth A. Ortmann, Ward 9
Joseph Vollmer, Ward 10
Tom Villa, Ward 11
Larry Arnowitz, Ward 12
Beth Murphy, Ward 13
Carol Howard, Ward 14

Jennifer Florida, Ward 15
Donna Baringer, Ward 16
Joseph D. Roddy, Ward 17
Terry M. Kennedy, Ward 18
Marlene E. Davis, Ward 19
Craig Schmid, Ward 20
Antonio French, Ward 21
Jeffrey L. Boyd, Ward 22
Joseph Vaccaro, Ward 23
Scott Ogilvie, Ward 24
Shane Cohn, Ward 25
Frank A. Williamson, Ward 26
Chris Carter, Ward 27
Lyda Krewson, Ward 28



CITY OF ST. LOUIS

BUDGET DIVISION

Paul W. Payne
Budget Director

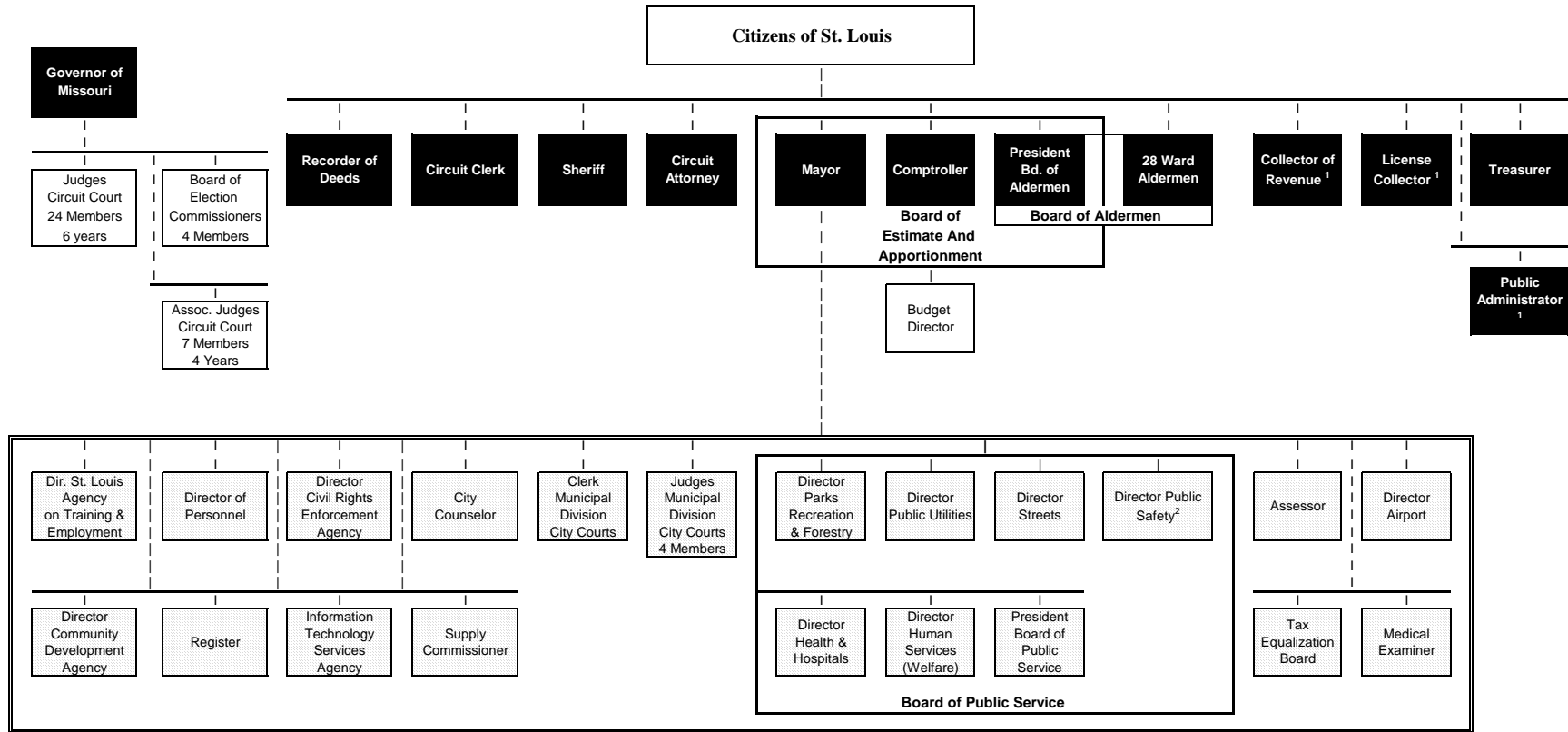
Edward Bess
Senior Budget Analyst

Jane Susman
Kenneth Schmitz
Budget Analysts

Michelle Robinson
Secretary

Special thanks to the Department and Division Heads; Linda Wessels and the entire Multigraph staff for their work on the cover of this document; and Christine Harper and all the Records Retention staff for their work on the reproduction of this document.

Government of the City of St. Louis, Missouri



■ Elective Offices - 4 Years

□ Offices appointed by Mayor

1 Indicates a fee office (not included in general appropriation)
 2 As of September 1, 2013, following a voter referendum in 2012 and adoption of Ordinance No. 69489, the City assumed local control of the Police Dept. as a division under the Dept. of Public Safety. Certain civilian units of the Police Dept. were merged into existing City departments while the Police Dept. assumed management of the City Marshals and the Park Rangers.



GOVERNMENT FINANCE OFFICERS ASSOCIATION

*Distinguished
Budget Presentation
Award*

PRESENTED TO

**City of St. Louis
Missouri**

For the Fiscal Year Beginning

July 1, 2013

Jeffrey R. Emen

Executive Director



TABLE OF CONTENTS

SUMMARY & OVERVIEW

EXECUTIVE SUMMARY.....	S-1
Budgeting Over the Long Term.....	S-12
Budget by Fund Groups	S-15
FY2015 Highlights	S-20
Budget Format.....	S-21
OVERVIEW	S-22
Economic Outlook.....	S-22
General Fund Overview.....	S-25
General Fund Budget Highlights.....	S-33
Projected Operating Results	S-35
Capital Improvements.....	S-37
Operating Plan Major Fund Types	S-39
Budget Summary Tables	S-41
General Fund Revenues Estimates	S-54
Earnings Tax	S-56
Payroll Tax	S-57
Sales Tax	S-58
Real and Personal Property Taxes.....	S-59
Gasoline Tax.....	S-60
Graduated Business License Tax.....	S-61
Franchise Tax.....	S-62
Special and Other Fund Revenues.....	S-63
Airport Authority	S-67
Water Division	S-68
½ Cent Capital Sales Tax.....	S-69
Local Use Tax	S-70
Riverfront Gaming.....	S-71
Restaurant Gross Receipts Tax	S-72
Hotel / Motel Sales Tax.....	S-73
Financial and Budgetary Policies	S-75
City Vision and Program Missions.....	S-78
City Department Goal Matrix.....	S-82

