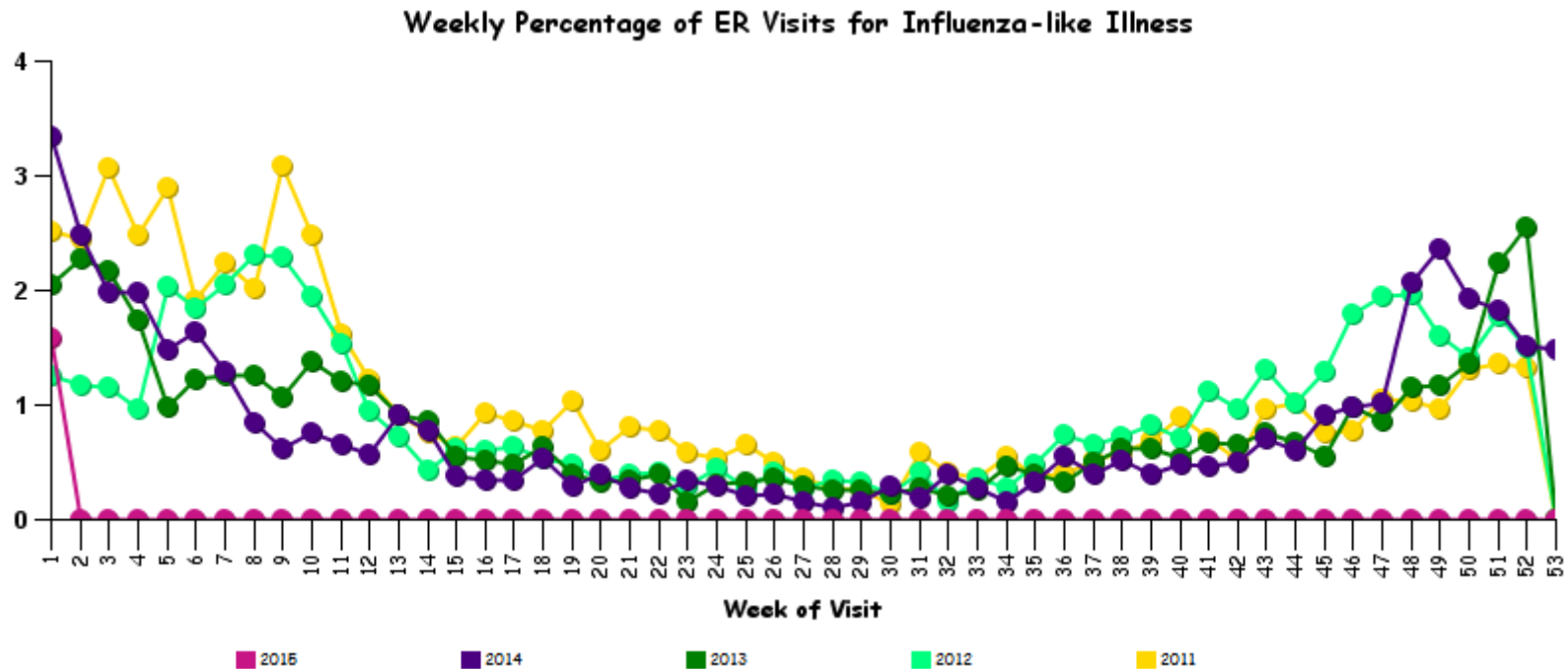




City of Saint Louis Department of Health Summary Surveillance Report Week 53

Influenza – There have been 995 cases of influenza reported in the city since October 1st, 2014; Influenza A (994), and one untyped. This graph shows the proportion of total weekly cases seen for Influenza-like Illness over the total number of cases seen in St. Louis City emergency rooms.



NOTE: The totals that are reflected on this report are provisional and based on the case definitions established by the Missouri State DHSS Communicable Disease Reference Manual. The totals reflect the number of cases reported (confirmed, probable, and suspect) from December 28, 2014 to January 03, 2015.