

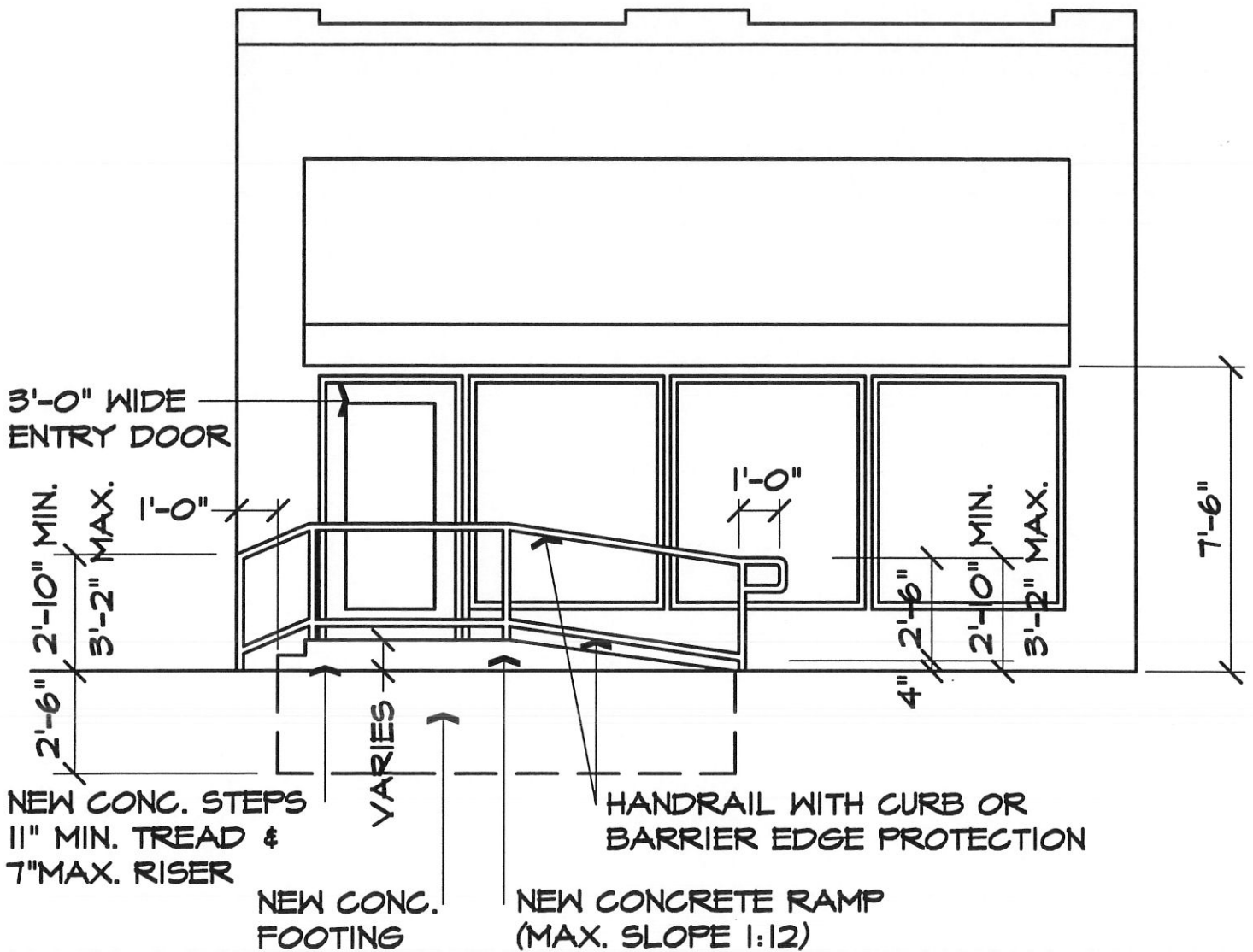
RAMP PLAN

SCALE: 1/4"=1'-0"

REFERENCE:

AMERICAN NATIONAL STANDARD
ICC/ANSI A117.1 CURRENT EDITION
ACCESSIBLE & USABLE
BUILDING & FACILITIES

A1.1



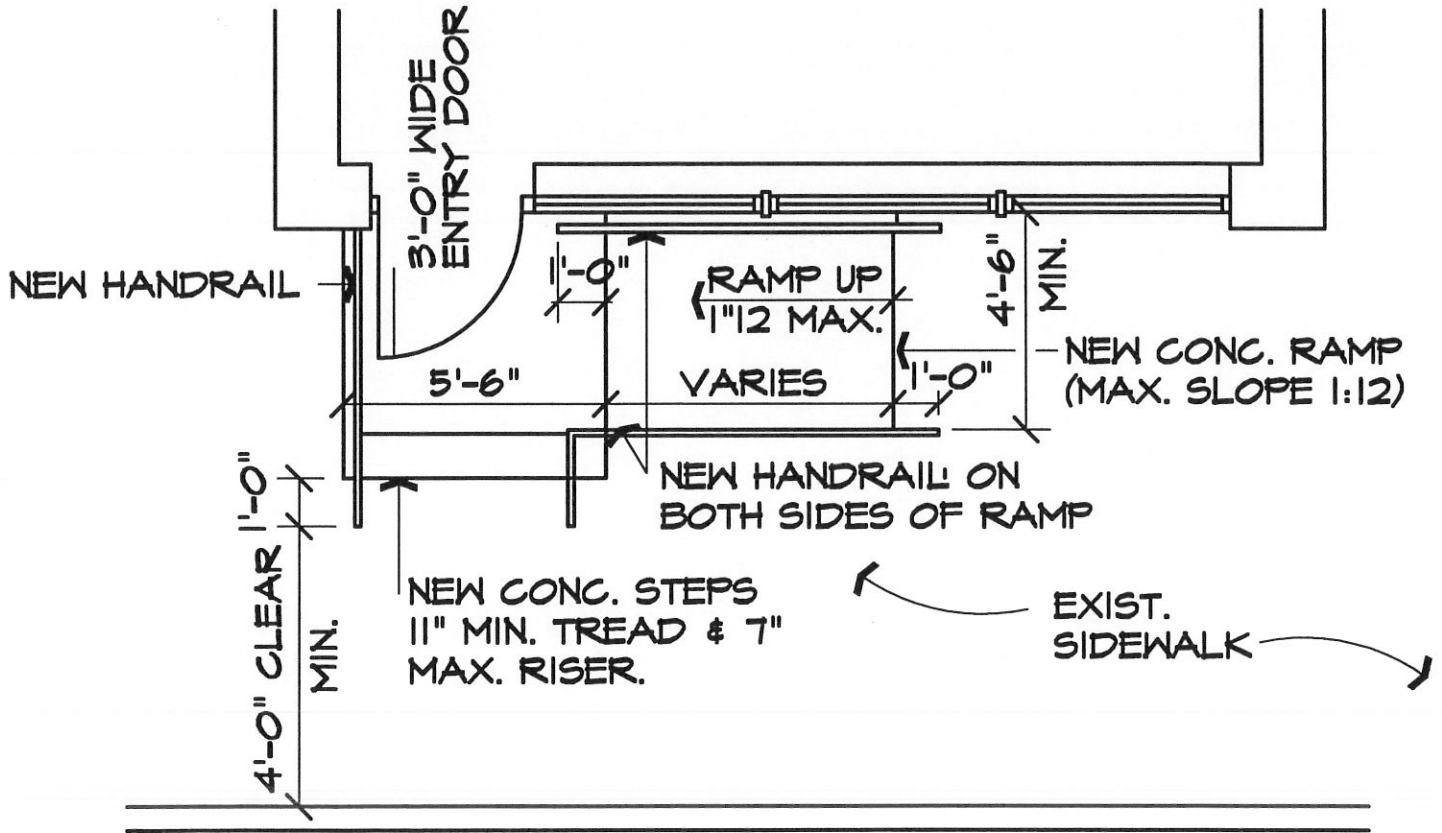
RAMP ELEVATION

SCALE: 1/4" = 1'-0"

NOTE:

A CONCRETE RAMP 14" OR LESS
IN HEIGHT SHALL NOT BE REQUIRED
TO HAVE A FOOTING

A1.2



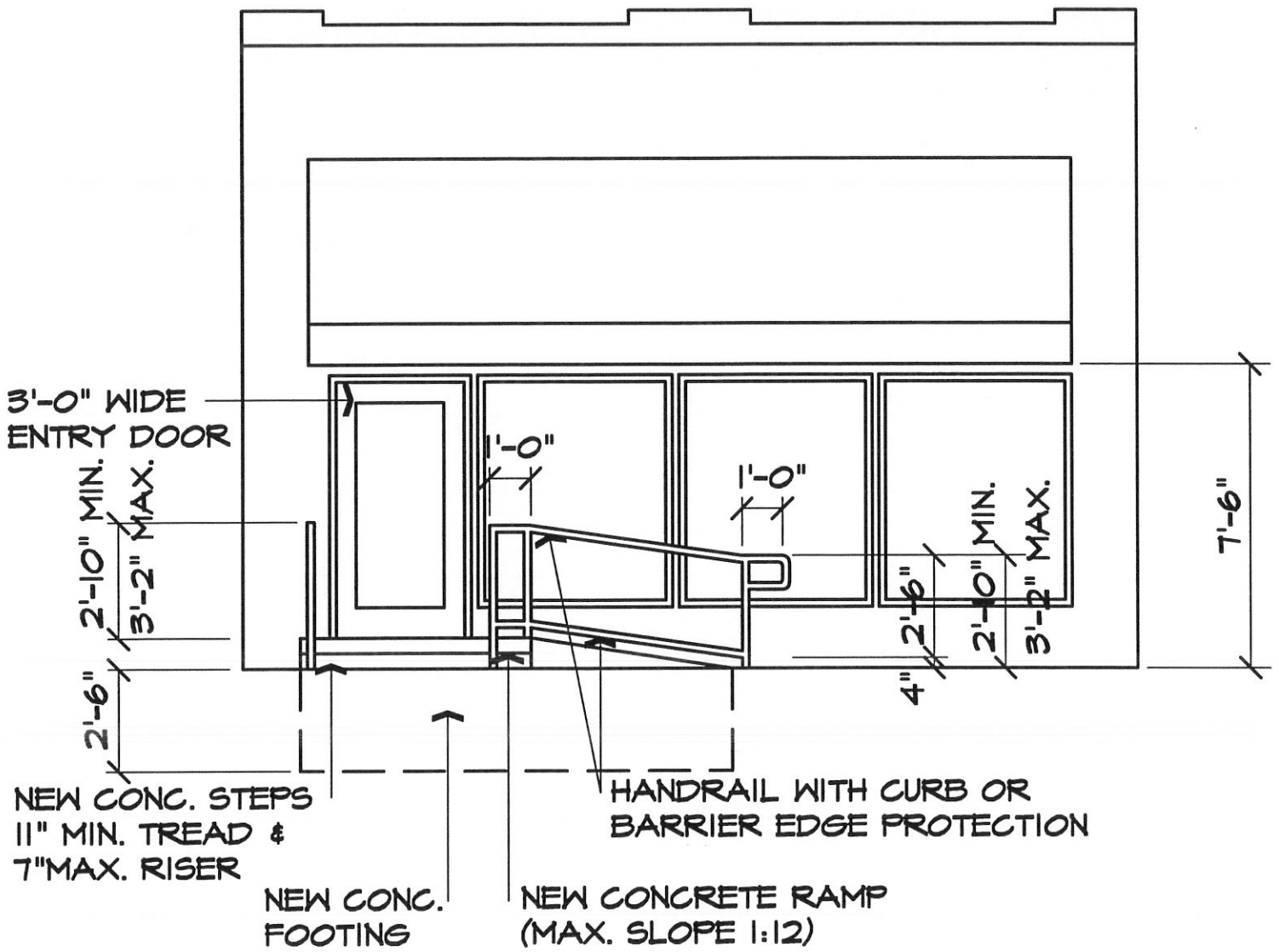
RAMP PLAN

SCALE: 1/4"=1'-0"

REFERENCE:

AMERICAN NATIONAL STANDARD
ICC/ANSI A117.1 CURRENT EDITION
ACCESSIBLE & USABLE
BUILDING & FACILITIES

A2.1



RAMP ELEVATION

SCALE: 1/4"=1'-0"

NOTE:

A CONCRETE RAMP 14" OR LESS IN HEIGHT SHALL NOT BE REQUIRED TO HAVE A FOOTING

A2.2