



Cultural Resources Office  
**PRESERVATION**  
**Board Meeting**

**November 27, 2017**

This activity is financed wholly through an allocation of Community Development Block Grant funds from the Department of Housing and Urban Development and the City of St. Louis' Community Development Administration.



**215 YORK AVENUE**



**215 YORK AVENUE**





**MARriott AC HOTEL AT CWE**

215 York Avenue, St. Louis, MO 63108

REVISION	DATE

ACTION

The logo for HDA (Holm Design Associates) features the lowercase letters 'hda' in a bold, sans-serif font. Below the letters, the text 'Holm Design Associates' is written in a smaller font, followed by 'ARCHITECTS' and 'PLANNERS'.



**YORK ELEVATION**



**SOUTH (LEFT) & NORTH ELEVATIONS**





**WEST (REAR)  
ELEVATION**



**VIEW ALONG YORK LOOKING SOUTHWEST**



**WEST ELEVATION**



**VIEW OF WEST FAÇADE FROM ADJACENT BUILDINGS**



**EXAMPLE OF PANEL FINISH PROPOSED**



**EXISTING BUILDING**









**CONTEXT OPPOSITE SOUTH**



**CONTEXT SOUTH**



**CONTEXT OPPOSITE ON YORK**



**CONTEXT SOUTH ON YORK**



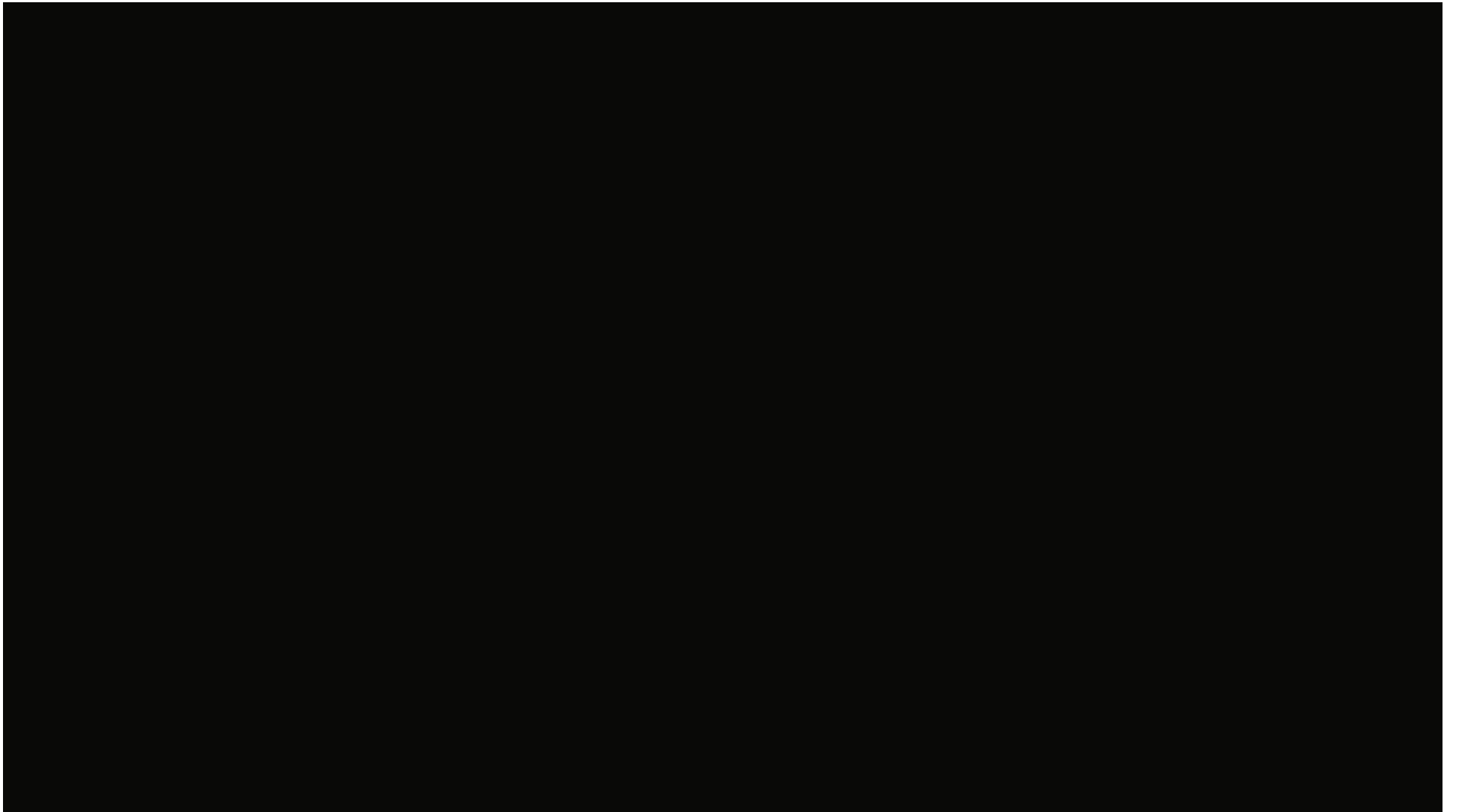
**CONTEXT AT LINDELL**



**SITE SEEN FROM MARYLAND PLAZA**



**CONTEXT AT MARYLAND PLAZA**





**300 S. BROADWAY**



**300 SOUTH BROADWAY**



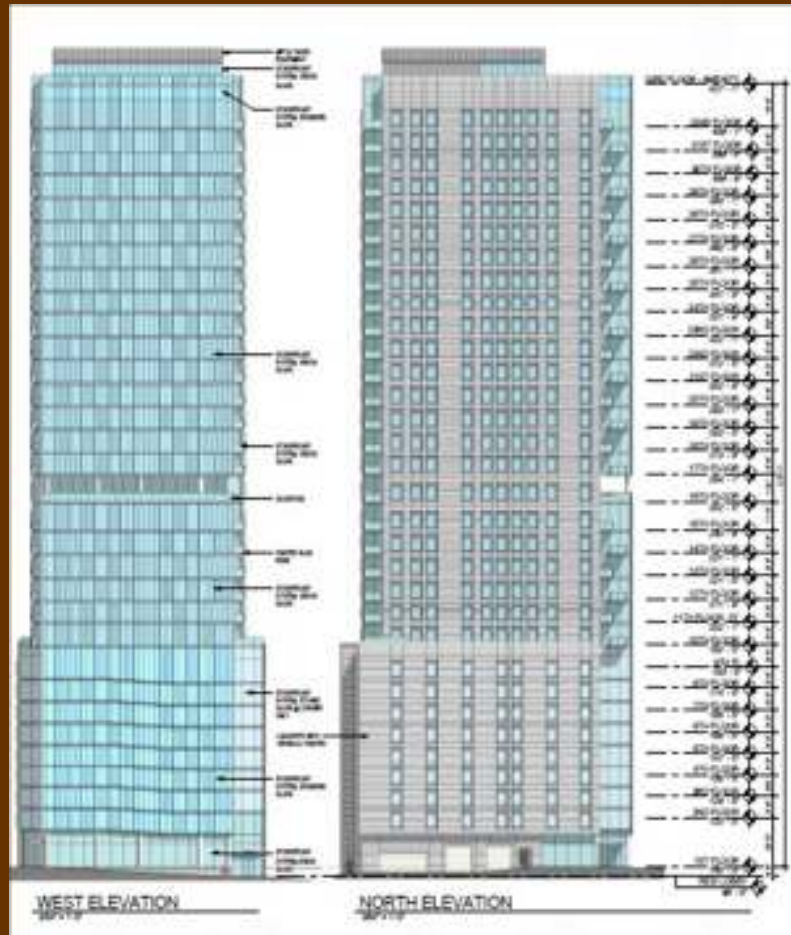




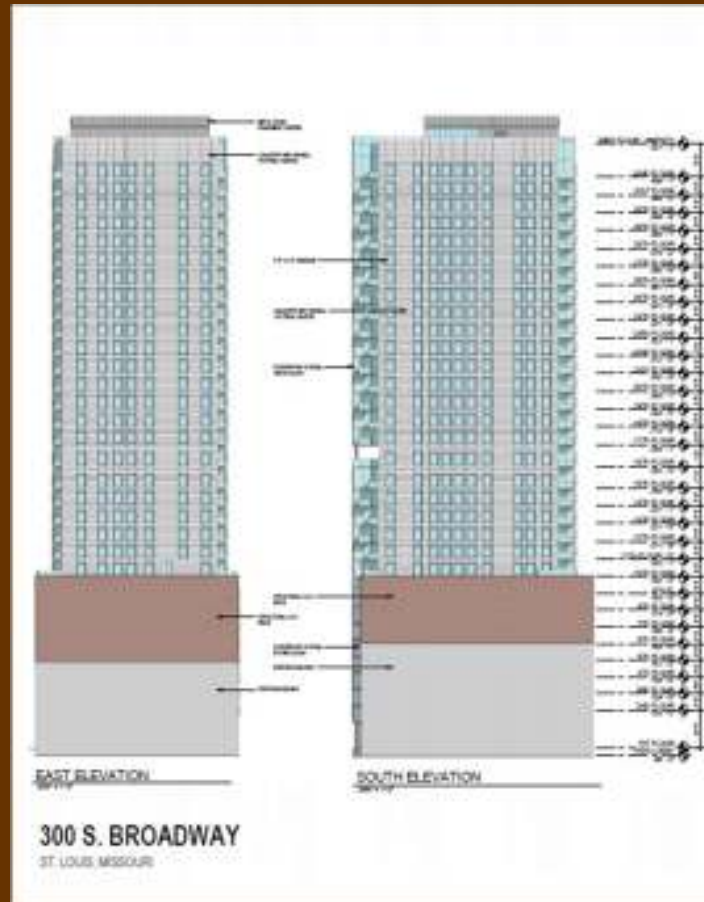
**300 SOUTH BROADWAY – PRIMARY FACADE**



**300 S. BROADWAY – CLARK STREET FAÇADE**



**PROPOSED WEST AND NORTH ELEVATIONS**



**PROPOSED EAST AND SOUTH ELEVATIONS**

END